



# Heavy-Duty Positioner

*MIG-Weld-Positioning | Transport / Pick and Place | Tool Change*

# Heavy-Duty Positioners

## Where robots come to their limits




For any kind of standard application in the field of manipulation the industrial robot is the preferred solution.

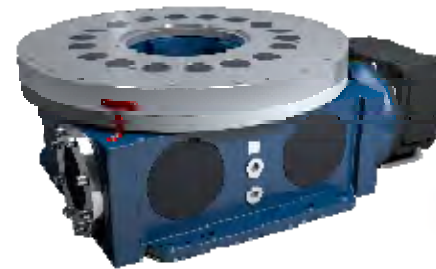
However, if size and weight of the part to be handled exceeds the standard dimension there is a need for a special system.

This is for example the case where the complete carbody has to be manipulated in a MIG-weld application.




EXPERT-TÜNKERS is a specialist in customized heavy-duty-drive components and applications

- Rotating

	Customer Load	max. 100 t
	Tooling Diameter	max. 10 m
	Transport Time	2 – 10 s



- Lifting

	Customer Load	max. 12 t
	Vertical Stroke	max. 2,8 m
	Transport Time	2 – 10 s



- Index turn table

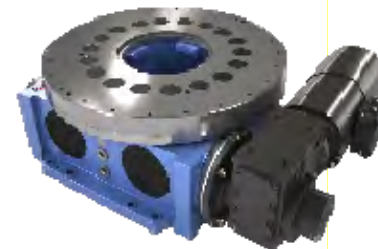
Camshaft driven turn table with precision bearing and servo-gearmotor



*High performance*



*Extreme precision*



- Toothring turn table

Cogwheel driven turn table with precision bearing and servo-gearmotor



*Flat design*



*High performance*



- Direct drive turn table

Servo-gearmotor driven, various motor configurations possible, robust housing and simple design for basic applications



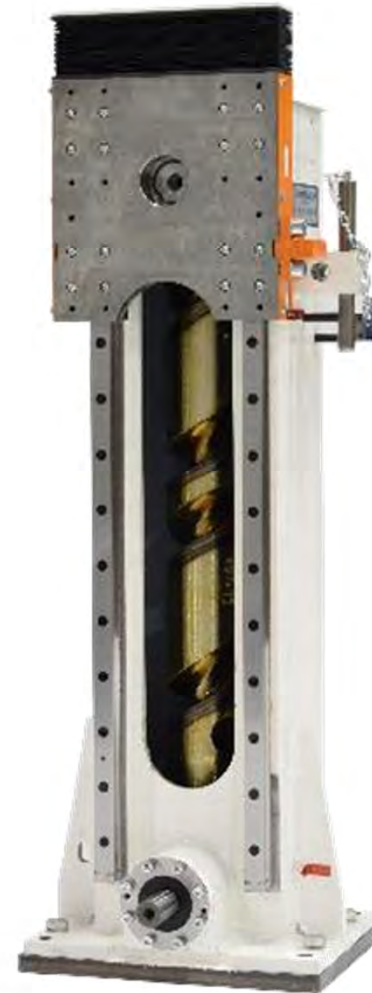
*Basic applications*



*Standard precision*



- Cam-driven slide supported by ball gearing guides
  - Max Lift 2,8 m
  - Max Load 12 t
  - Robust design for full cycle performance



# Example: Heavy-duty MIG-weld positioner

Multi-axis positioner for precise positioning of complete truck-cabins



<https://www.youtube.com/watch?v=a02J0ypW2RY>





- Underbody welding with exchangeable toolings
- Fast framed-tooling exchange system
- Electrical synchronization of Dual-EDH960 trunnion
- High loads, imbalances and large dimensions of toolings

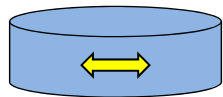
# Example: Trunnion on lift station

Positioner for complete underbody /body

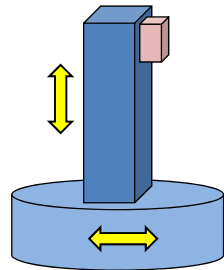




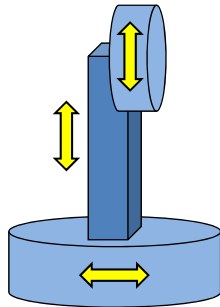
# Customized application concept using EXPERT standard drives



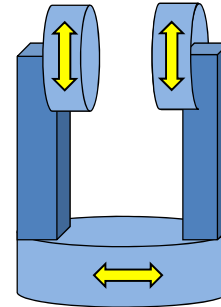
Turn



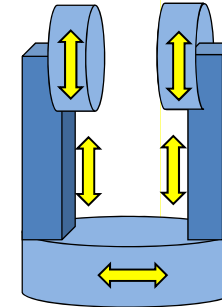
Turn + Lift



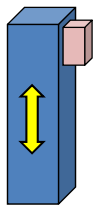
Turn + Lift + Turn



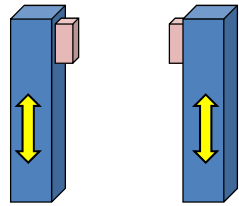
Turn + Trunnion



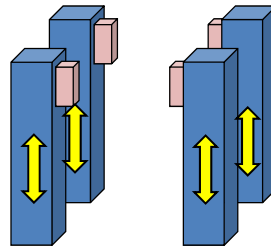
Turn + Lift + Trunnion



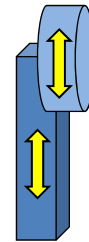
Single Lift



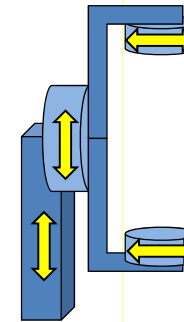
Double - Lifter



Quad - Lifter



Lift + Turn



Lift + Turn + Trunnion

**Kontakt:**

EXPERT-TÜNKERS GmbH  
Herr F. Giebenhain  
Seehofstraße 56-58  
64653 Lorsch

Telefon +49 (0) 6251 / 592-0  
Telefax +49 (0) 6251 / 592-100

E-Mail [fgiebenhain@expert-tuenkers.de](mailto:fgiebenhain@expert-tuenkers.de)  
Internet [www.expert-tuenkers.de](http://www.expert-tuenkers.de)