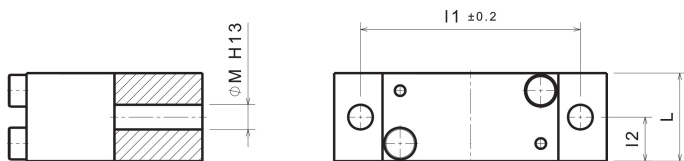
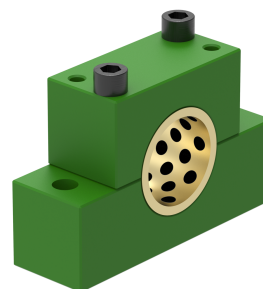
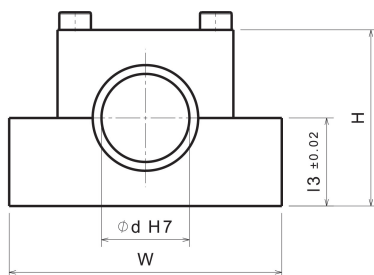


BO

Pillow block bearing, split type with split guide bush SOB



Product discription:

Pillow block bearing, split type with split guide bush SOBB2

Article properties:

Base Material	Special Brass (SO#50SP2)
Self-lubricating	Yes
Lubricant	Graphite
Surface Pressure P	100 N/mm ²
Sliding speed v	30 m/min
P*v-value	200 N/mm ² x m/min
Operating temperature	-50°C / +200°C (max. 300°C)
Friction coefficient	0,07

Variants:

Articlenumber	Article name	Inner diameter d	Width W	Length L	Height H	I1	I2	I3	M (DIN EN 20273)
62500146	BO-20	20	85	20	40	62	10	20	2xM6
62500147	BO-25	25	100	25	50	75	12,5	25	2xM8
62500148	BO-30	30	110	30	60	85	15	30	2xM8
62500149	BO-40	40	130	40	70	105	20	40	2xM10
62500150	BO-50	50	155	50	100	125	25	50	2xM12