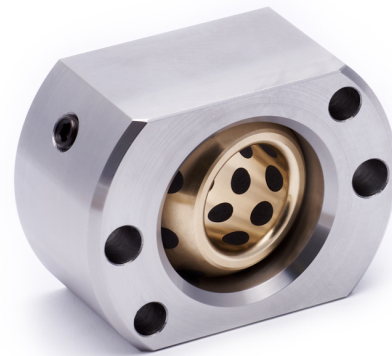
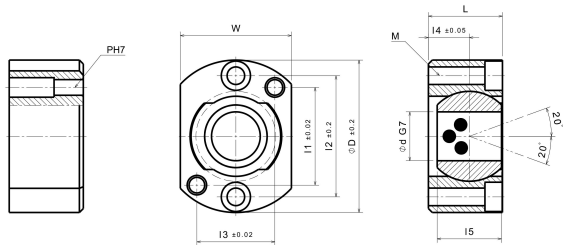


## MTG

Spherical bearing for inclined ejector units (for small and medium sized moulds)



### Product description:

Spherical bearing for inclined ejector units (for small and medium sized moulds)

### Article properties:

Base Material	Special Brass (SO#50SP2)
Self-lubricating	Yes
Lubricant	Graphite
Surface Pressure P	100 N/mm <sup>2</sup>
Sliding speed v	30 m/min
P*v-value	200 N/mm <sup>2</sup> x m/min
Operating temperature	-50°C / +200°C (max. 300°C)
Friction coefficient	0,07

### Variants:

Articlenumber	Article name	Inner diameter d	Outer diameter D	Width W	Length L	I1	I2	I3	I4	I5	M (ISO 4762)	P (ISO 8734)	Supplies
26005008	MTG 8	8	44	28	17	28	32	20	9	14	2xM5	2xø5	NH6
26005010	MTG 10	10	46	30	20	28	34	22	11	16	2xM5	2xø5	NH6
26005012	MTG 12	12	50	32	22	30	36	22	12	18	2xM6	2xø6	NH8
26005016	MTG 16	16	58	45	29	35	45	30	16	25	2xM6	2xø6	NH8
26005020	MTG 20	20	65	50	33	40	52	35	18	28	2xM6	2xø6	NH8
26005025	MTG 25	25	78	57	38	50	62	40	21	33	2xM8	2xø8	NH10
26005030	MTG 30	30	86	65	43	55	70	48	24	37	2xM8	2xø8	NH10