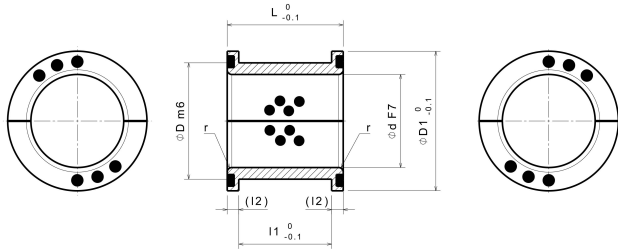


SOBB2

Devidable bush with integrated thrust washers on both sides



Product discription:

Devidable bush with integrated thrust washers on both sides

Article properties:

| | |
|-----------------------|-------------------------------|
| Base Material | Special Brass (SO#50SP2) |
| Self-lubricating | Yes |
| Lubricant | Graphite |
| Surface Pressure P | 100 N/mm ² |
| Sliding speed v | 30 m/min |
| P*v-value | 200 N/mm ² x m/min |
| Operating temperature | -50°C / +200°C (max. 300°C) |
| Friction coefficient | 0,07 |

Variants:

| Articlenumber | Article name | Inner diameter d | Outer diameter D | Length L | D1 | l1 | l2 | r |
|---------------|----------------|------------------|------------------|----------|----|----|----|---|
| 19200228 | SOBB2 20-35-28 | 20 | 35 | 28 | 35 | 20 | 4 | 1 |
| 19250233 | SOBB2 25-40-33 | 25 | 40 | 33 | 40 | 25 | 4 | 1 |
| 19300240 | SOBB2 30-48-40 | 30 | 48 | 40 | 48 | 30 | 5 | 1 |
| 19400250 | SOBB2 40-60-50 | 40 | 60 | 50 | 60 | 40 | 5 | 1 |
| 19500260 | SOBB2 50-68-60 | 50 | 68 | 60 | 68 | 50 | 5 | 1 |