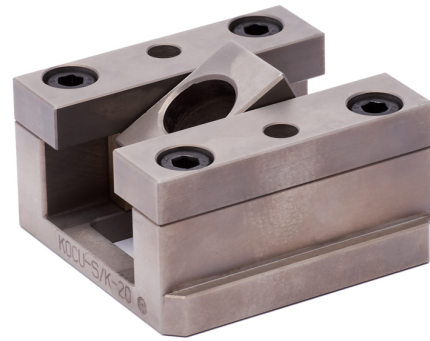
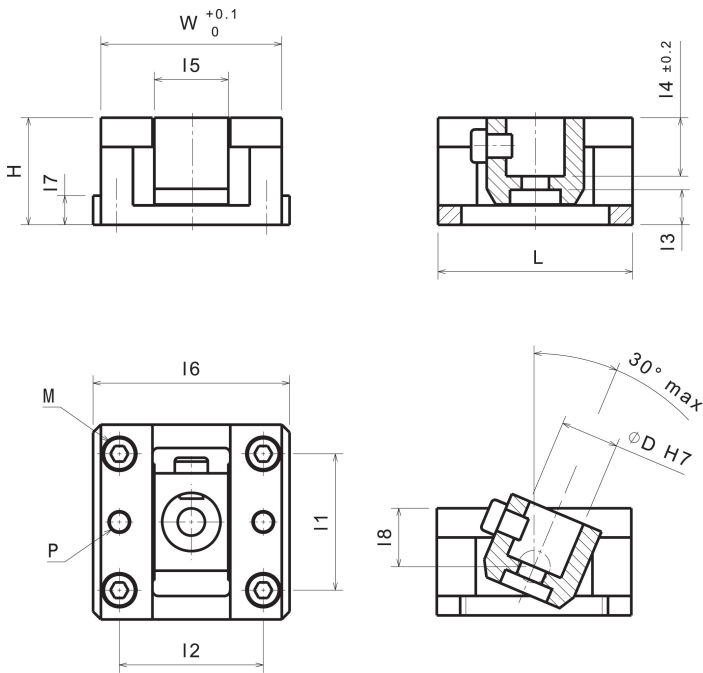


KOCU-S

Inclined ejector unit



Product description:

Inclined ejector unit

Article properties:

Self-lubricating	Yes
Lubricant	Graphite

Variants:

Articlenumber	Article name	Bolt diameter D	Width W	Length L	Height H	I1	I2	I3	I4	I5	I6	I7	I8	M (ISO 4762)	P (ISO 8734)	Stroke
26000008	KOCU-S-8	8	30	32	22	20	24	10	8	11	33	5	12,5	4xM3	2xø3	10
26000010	KOCU-S-10	10	40	45	27	30	32	12,5	10	15	45	5	15,5	4xM4	2xø4	18
26000012	KOCU-S-12	12	51	50	32	35	39	15	12	17	57	7	18	4xM6	2xø6	20
26000016	KOCU-S-16	16	58	65	36	40	46	15	16	22	65	8	20	4xM6	2xø6	25
26000020	KOCU-S-20	20	72	80	42	55	56	16	20	26	80	11	23	4xM8	2xø8	30
26000025	KOCU-S-25	25	85	90	50	65	66	17	25	32	93	15	28	4xM10	2xø10	35
26000030	KOCU-S-30	30	93	100	55	70	74	17	30	38	101	15	30	4xM10	2xø10	40
26000035	KOCU-S-35	35	110	120	62	80	85	18	35	45	120	15	35	4xM12	2xø10	45
26000040	KOCU-S-40	40	120	135	70	90	95	19	40	55	130	15	40	4xM12	2xø10	50
26000045	KOCU-S-45	45	130	150	80	110	105	24	45	60	140	15	45	4xM12	2xø10	55
26001308	KOCU-S-8-DH	8	30	42	22	30	24	10	8	11	33	5	12,5	4xM3	2xø3	20
26001310	KOCU-S-10-DH	10	40	63	27	45	32	12,5	10	15	45	5	15,5	4xM4	2xø4	36
26001312	KOCU-S-12-DH	12	51	70	32	50	39	15	12	17	57	7	18	4xM6	2xø6	40
26001316	KOCU-S-16-DH	16	58	90	36	60	46	15	16	22	65	8	20	4xM6	2xø6	50
26001320	KOCU-S-20-DH	20	72	110	42	75	56	16	20	26	80	11	23	4xM8	2xø8	60
26001325	KOCU-S-25-DH	25	85	125	50	85	66	17	25	32	93	15	28	4xM10	2xø10	70
26001330	KOCU-S-30-DH	30	93	140	55	100	74	17	30	38	101	15	30	4xM10	2xø10	80
26001335	KOCU-S-35-DH	35	110	165	62	120	85	18	35	45	120	15	35	4xM12	2xø10	90
26001340	KOCU-S-40-DH	40	120	185	70	140	95	19	40	55	130	15	40	4xM12	2xø10	100
26001345	KOCU-S-45-DH	45	130	205	80	160	105	24	45	60	140	15	45	4xM12	2xø10	110